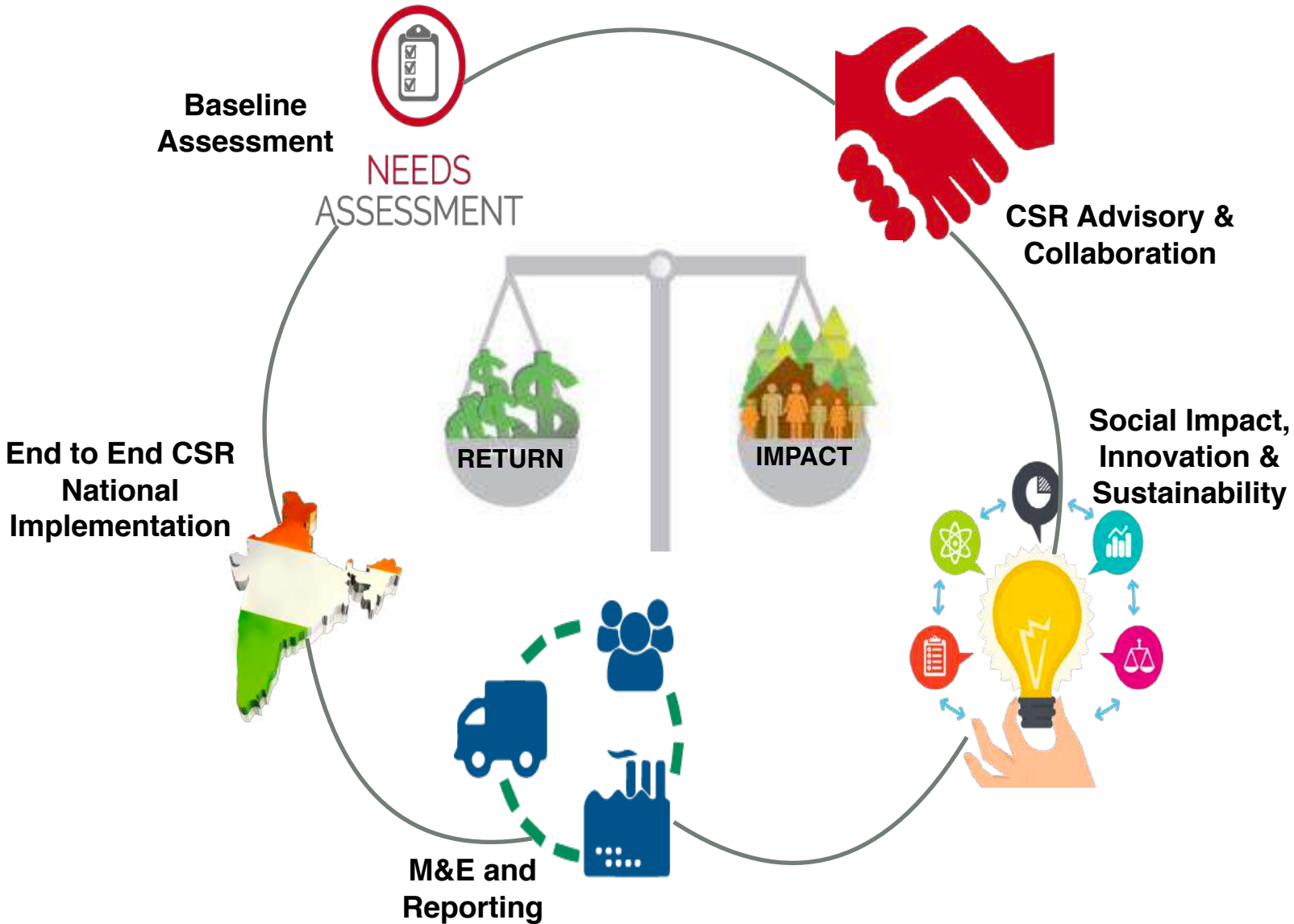




Third
Planet
Foundation

Credential
3planet.org | New Delhi, India

Who We Are? ABOUT US



Third Planet Foundation, *incepted in 2012*
CSR implementation organization
Section 8 (not-for-profit)
Aligned to **Schedule VII, Section 135 of the Companies Act 2013** guidelines

Eradicating Poverty, Hunger & Malnutrition
Rural & Slum Development
Promoting Education
Promoting Healthcare
Promoting Livelihood Linked Skill Development
Water, Sanitation & Hygiene
Gender Equality & Empowering Women
Agriculture Development
Environment Sustainability
Promotion of Renewable Energy
Disaster Relief & Rehabilitation

EMPANELMENTS



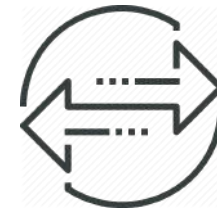
Where We Are? OUR PRESENCE



**Customization
& Innovation**



**National
Implementation**



**Direct Field
Implementation**



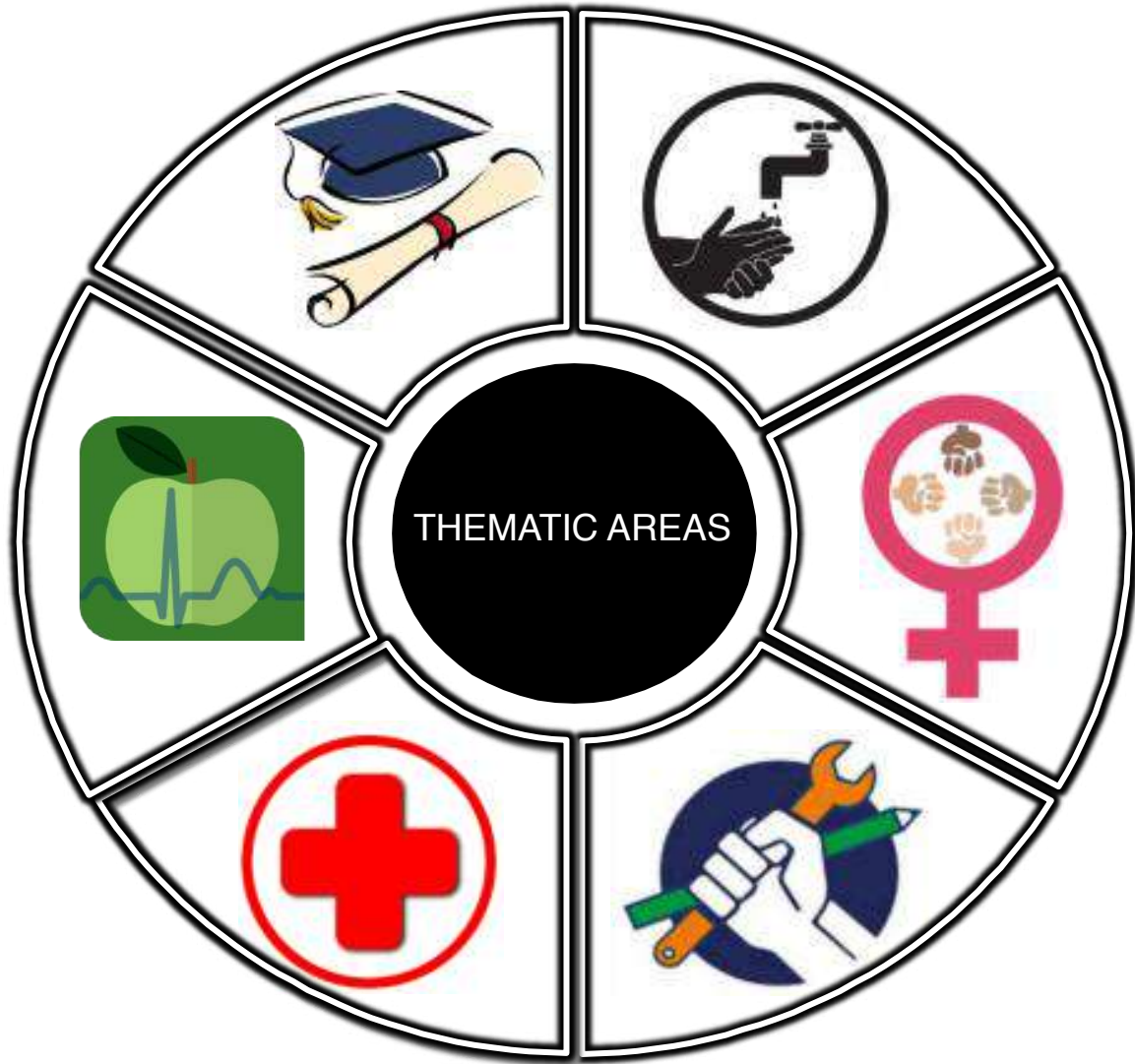
**Development
towards Impact**



**Sustainable
Development**

How We Do? THEMATIC AREAS

Aligned with Ministry of Corporate Affairs (MCA) guidelines and Sustainable Development Goals (SDG)



SUSTAINABLE DEVELOPMENT GOALS





What We Do? THEMATIC AREAS



QUALITY EDUCATION

- ❖ Digital Education – Computer Labs, Smart Classes, e-Library etc.
- ❖ STEM Education – Labs & Provision of Teachers
- ❖ Training of Teachers - Teaching Skills + Pedagogical Theory + Professional Skills
- ❖ Bridge Education & Remedial Sessions – Catering to weak students
- ❖ Sports for Development – Playgrounds, Sports Equipment, Coaches, Linkages at District & State Level
- ❖ School Infrastructure Development - Construction / Renovation of school building, furniture & fixtures, provisions of dustbins, RO system & cooler, construction / renovation of toilet complex, installation of incinerators & dispensers in girls' toilet etc.
- ❖ Solar Panels & Awareness on Renewable Energy
- ❖ Waste Management
- ❖ School Management Committee & Parent Teacher Association
- ❖ Counselling Sessions with Parents – to encourage them to send their children to schools (reduce drop-outs & increase attendance)
- ❖ Inter School and Intra School Competitions – talent hunt (music, sports, dance etc.)
- ❖ Adolescent Health, Sanitation, Menstrual Hygiene, Good Touch-Bad Touch, Career Counselling, Personality Development etc.



What We Do? THEMATIC AREAS



WATER, SANITATION & HYGIENE (WASH)

- ❖ Safe Drinking Water – RO System & Cooler in schools and Water ATM in community
- ❖ Awareness & Sensitization Sessions –students and community
- ❖ Household Toilet, Community & School Toilet Complexes
- ❖ Operations & Maintenance of Toilets
- ❖ Sustainability Model - Social Entrepreneurs
- ❖ IEC Dissemination – pre and post triggering activities
- ❖ Hand washing, flushing, cleanliness, menstrual hygiene etc.
- ❖ Swachata Doots – representatives from the community
- ❖ Cleanliness Drives, Dustbins and linkages with local municipal corporation
- ❖ Waste Management, Soak Pits, Septic Tanks etc.



What We Do? THEMATIC AREAS



WOMEN EMPOWERMENT

- ❖ Skill Enhancement – Self Help Group (SHG) Model
- ❖ Community Engagement & Market Mapping
- ❖ Women Mobilization & Awareness
- ❖ Trade Mapping (as per geography) – broom, tailoring, embroidery, dona pattal, bag, artificial jewelry, sanitary pad, toys etc.
- ❖ Formation of SHG
- ❖ Training – equipped SHG centre, trainers, raw material etc.
- ❖ Literacy classes - orientation on financial and social security issues
- ❖ Life skill education sessions - health & hygiene, child education etc.
- ❖ Bank Linkages – saving habits, book keeping, MIS, bank accounts, business operations & management
- ❖ Exposure Visits & Counselling
- ❖ Market Linkages – initial work orders, capital / raw material support, linkages at local & main markets
- ❖ SHG Federation & Microenterprises Development



What We Do? THEMATIC AREAS



SKILL & LIVELIHOOD DEVELOPMENT

- ❖ Skill Enhancement – Vocational Training
- ❖ Community Engagement & Industry Mapping
- ❖ Youth Mobilization & Awareness
- ❖ Trade Mapping (as per geography) – electrical, IT/ITES, plumbing, construction, BFSI, hospitality, housekeeping, engineering, logistics, BPO etc.
- ❖ Counselling, Screening & Enrolment
- ❖ Training – equipped skill development centre, trainers, tools & equipment etc.
- ❖ Exposure Visits, Guest lectures etc.
- ❖ Live projects and on the job training
- ❖ Assessment & Certification – recognized institution i.e. NSDC, Sector Skill Council, PHD Chambers etc.
- ❖ Placement and Entrepreneurship Development
- ❖ Post Placement Tracking



What We Do? THEMATIC AREAS



QUALITY HEALTHCARE

- ❖ Mobile Health Unit
- ❖ Health Camps – General, Specialized – Gynecologist, Pediatric, Dental, Eye care etc. (as per disease trend)
- ❖ Free Medicines & Inventory Management
- ❖ Training of Health Workers – ASHA & AWW
- ❖ Preventive, Curative, Diagnostic and Referrals
- ❖ Renovation of Anganwadi Centre / Primary Health Centre (PHC) / Local Dispensary / Hospitals / CHC etc.
- ❖ Medical equipment's & machines to PHC, CHC etc.
- ❖ Technology Integration – training of frontline workers, MIS, alerts etc.
- ❖ Health Committee, Matru Shishu Samiti (mother & child)
- ❖ IEC Dissemination & Awareness
- ❖ Adolescent Health, Nutrition, Menstrual Hygiene etc.
- ❖ Kitchen Garden, organic food etc.



What We Do? THEMATIC AREAS



AGRICULTURE DEVELOPMENT & ENVIRONMENT SUSTAINABILITY

- ❖ Farmers Engagement through Formation of Farmers Club
- ❖ Krishi Information Centre / Kisan Seva Kendra
- ❖ Soil Health Management
- ❖ On Farm Water Management
- ❖ Integrated Nutrients Management
- ❖ Demonstration Farms
- ❖ Vermi Composting
- ❖ Horticulture
- ❖ Organic Farming
- ❖ Weed Management
- ❖ Saatvik Haats (Farm Produce Exhibitions)
- ❖ eSaatvik (e-commerce market place)
- ❖ Farmers Producer Company
- ❖ Promotion of Renewable Energy



What We Do? THEMATIC AREAS



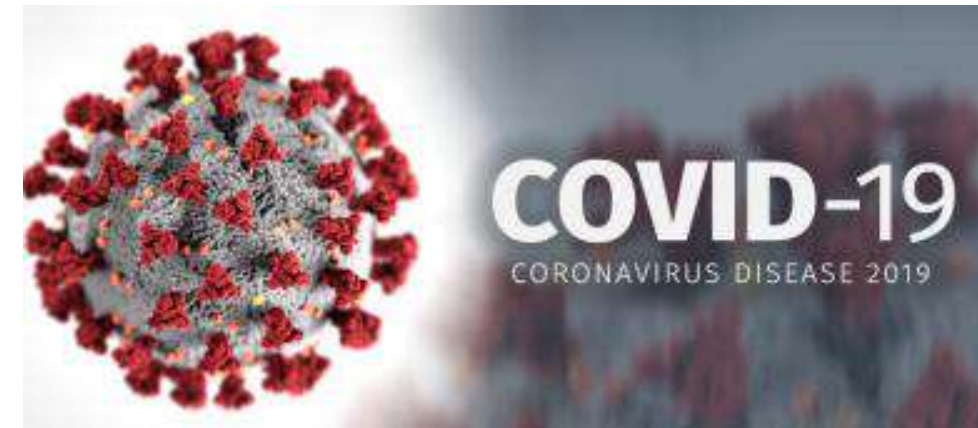
DISASTER RELIEF & REHABILITATION

❖ COVID – 19 Relief & Rehabilitation

- ❖ Food Ration Kits, Hygiene & Essential Kits
- ❖ Financial Support
- ❖ Livelihood (Skill Mapping, Re-Skilling & Up-Skilling)
- ❖ Education
- ❖ Health & Cleanliness Awareness

❖ Natural Disaster Relief & Rehabilitation

- ❖ Relief kits – Food, Hygiene, Medicines, Blankets etc.
- ❖ Social Infrastructure Development
- ❖ Education
- ❖ Livelihood
- ❖ Healthcare
- ❖ Water, Sanitation & Hygiene



What We Aspire? COLLOBORATE

CSR PROJECT IMPLEMENTATION end-to-end

(Project Customization, Direct On-ground Implementation, M&E and Reporting)



CSR ADVISORY

(Policy & Framework, Road Map, Capacity Building, Due Diligence, M&E, Social Audits, Sustainability Reporting)



NEED ASSESSMENT & BASELINE STUDY

(Planning, Survey, Household, Community, Government Bodies, FGDs, Data Collection & Analysis, Reporting & Recommendation)



SOCIAL IMPACT & INVESTMENT

(Planning, Survey, Household, Community, Government Bodies, FGDs, Data Collection & Analysis, Reporting, SROI & Recommendation)





Third
Planet
Foundation

Thank You
3planet.org | New Delhi, India