



Y-SOURCE Presentation

YOUR RELIABLE PARTNER IN CHINA



Contents

- ❖ Brief Introduction
- ❖ Overview of activities
- ❖ Locations
- ❖ Corporate Structure
- ❖ Business Scope
- ❖ Sourcing Service
- ❖ Contact Us



Brief Introduction

- ❖ Y-Source is an experienced international sourcing and international freight forwarder company headquartered in Hong Kong
- ❖ China A Class License, China Import & Export License, IATA & FIATA License, NVOCC License, Customs Brokage License, etc. which ensure our high quality service and position in Freight Forwarding and Logistics industry.
- ❖ We have well set up first office in Xiamen, and we will plan to open more offices in other major cities in the near future.
- ❖ Our strong advantage
 - ❖ The person of our team are specialists of international freight forwarding with experiences more than 10 years and strong ability to solve problems on the way.
 - ❖ Strong business relationship with leading shipping lines
 - ❖ Guaranteed space and competitive rates
 - ❖ From transport, via warehousing, to an extensive range of value-added services, Intelligent team offer you intelligent services
 - ❖ Any shipment from/to China would be provided the best and convenient service by us as soon as possible.

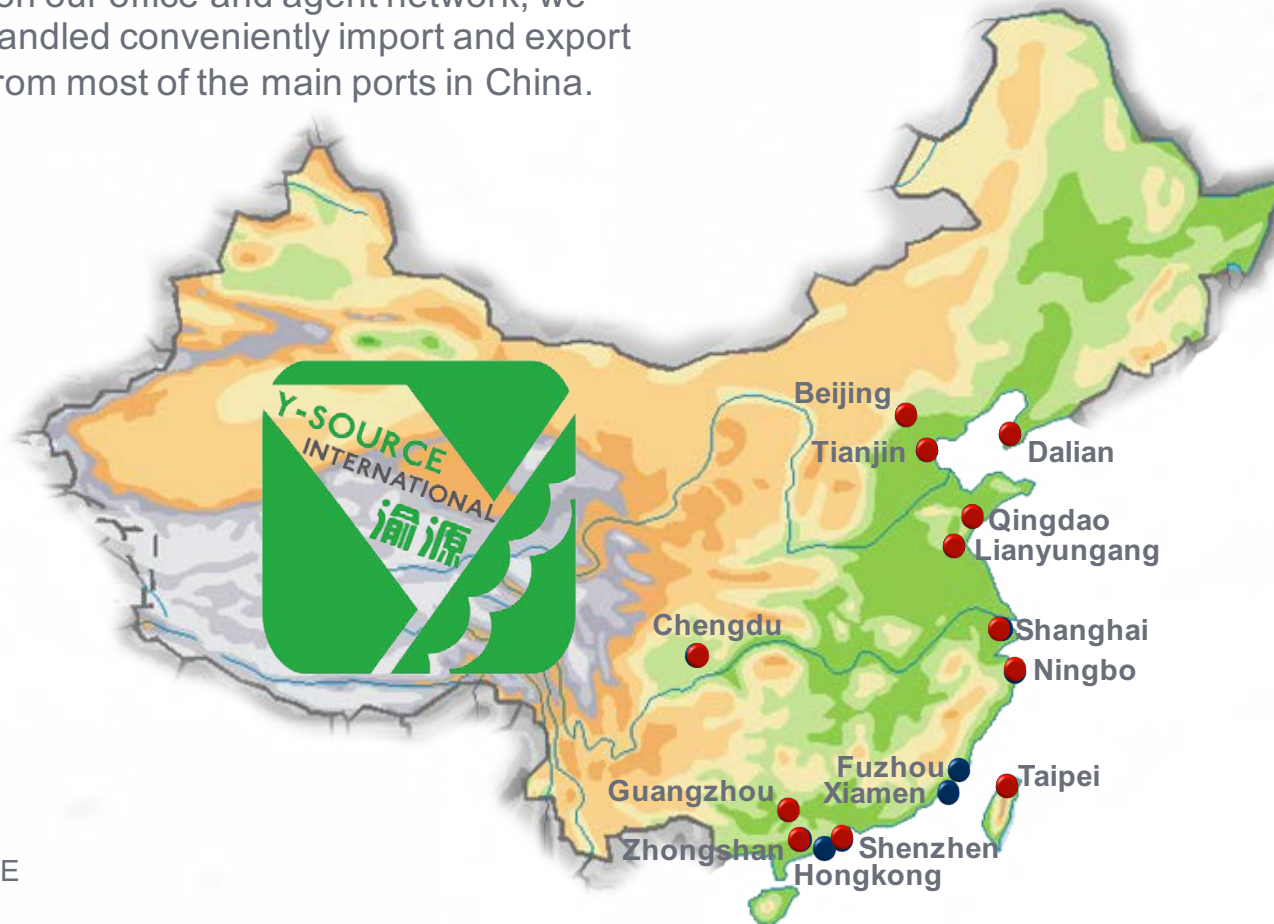
Overview of activities



- ❖ Inbound & Outbound **Sea Freight** / **Air Freight** / **Railway Freight** Services
- ❖ Door to Door Delivery Services
- ❖ Warehouse and Storage Services
- ❖ Custom Brokerage Services
- ❖ Domestic Distribution Services
- ❖ Dangerous Goods Management Services
- ❖ Special Cargo Management Services
- ❖ Project Cargo Handling Services

Locations

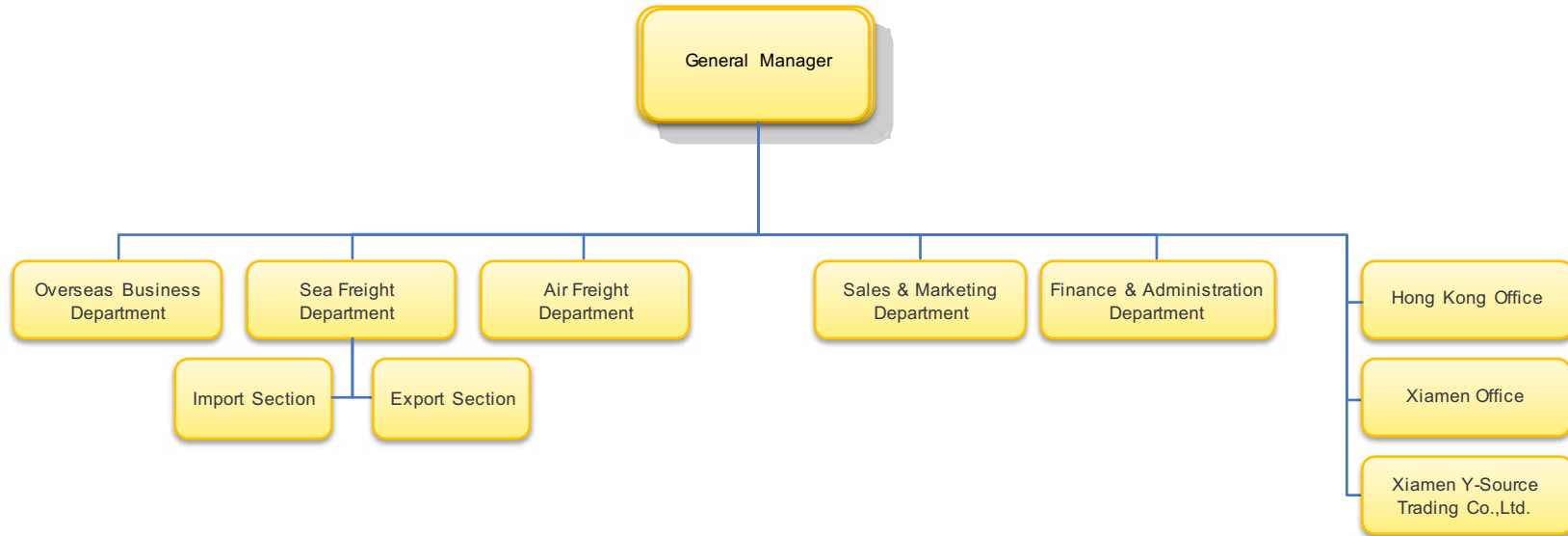
- ❖ Depend on our office and agent network, we can be handled conveniently import and export service from most of the main ports in China.



- Y-SOURCE
- Agent

Status 17 November 2011

Corporate Structure



Business Scope

- ❖ Ocean Freight Service:
 - ❖ We cover both FCL, LCL Consolidation, transshipment handling for any types of cargoes.
- ❖ Air Freight Service:
 - ❖ We provide flexible airline schedule with better transit time, competitive rate and cost saving.
- ❖ Logistics Management:
 - ❖ Our services also include pack & pick, relabeling, trucking, warehousing, custom brokerage etc.
- ❖ Railway Freight Services:
 - ❖ We can also provide the railway freight service from China to Central Asia and Russia/CIS for cargo types as containerized cargo and conventional cargo(in covered wagons).
- ❖ Our warehouses in Hong Kong and Mainland China which can provide one-stop services:
 - ❖ Container Trucking Service.
 - ❖ Loading & Unloading Service.
 - ❖ Computerized Inventory Management.
 - ❖ Picking and Packing Service.
 - ❖ Just in Time Local Delivery and Re-shipment.
 - ❖ Tailor Made and Professional Warehouse Management Service.

Sourcing Service

- ❖ Xiamen Y-Source Trading Co.,Ltd. was an experienced international trade company with import & export license approved by the Chinese Ministry of Commerce. The company primarily concentrates on sourcing the right products according to the overseas customer's demand, and we do our utmost to follow the order coordinator to ensure the goods delivery on time smoothly. We are specialists for the overseas buyers that span various of products. We have built our reputation by continuously offering target products and good after-sales services. High quality and competitive price are always our first priority.
- ❖ Our Sourcing Service:
 - ❖ Studying the products well and finding the reliable suppliers
 - ❖ Selecting samples for clients to evaluation and confirmation
 - ❖ Negotiating pricing and terms of sale
 - ❖ Follow the bulk production
 - ❖ Quality Control
 - ❖ Delivery Arrangement
 - ❖ Pre-shipment Inspection
 - ❖ If failed on inspection, coordinate with the factory and arrange the second inspection
 - ❖ Ensure on-time delivery
 - ❖ Reorder processing and consecutive service

Franky Ke

Y-SOURCE International (Hong Kong) Limited.

Xiamen Office

Room 102, B Nanshan Building

No. 402 Nanshan Road

Xiamen 361006, P.R. China

Phone: +86 592 6013 242

Fax: +86 592 6013 247

Email: franky.ke@y-source.com

