



KIKUMU AGRICULTURE RESEARCH CENTRE

P.O. Box 263, opposite Mawa Market

Kasese Uganda

Tel: +256 756987602

kikumuar@gmail.com

www.kikumuar.org

www.http://kikumuaagricultureresearchcentre.blogspot.com

Date 30/4/2016

BROCHURE

BACKGROUND

Kikumu agriculture research centre is women organizations in Kasese Western Uganda. The organization is promote sustainable small scale agriculture enterprise development by creating community education and support for advocacy strategies relevant to the marginalized rural population development needs in Rwenzori region through involvement local communities in identifying their needs and developing possible solutions that are appropriate for improving and transforming agricultural and environmental situations in Kasese district and Rwenzori region in general.

The organization comprises of women and men, who are qualified and experienced specialist in the field of social sciences, agriculture and analysts. It is a community based and charitable non-government organization. It was initiated in 5 May 1999 after ADF wars in Kasese Uganda.

Kasese District since 1950s has been in Political wars and wars plundered the agricultural enterprises. Most of agricultural Activities were left not functioning. KARC was established to help rural communities in promotion of information in agricultural enterprises development.

(a) GOAL

To pave ways to fighting poverty through participatory, collaborative for economic empowerment of the rural people through improved sustainable small scale agriculture innovations.

(b) MISSION

Improving local grass root communities in achieving a society of transformation in small scale rural agriculture enterprise technologies for economic and socio-cultural Development.

VISSION

Working for well developed strengthen and active rural agricultural technological society which add value on rural enterprises to break ties of rural poverty.

OBJECTIVES OF KARC

1. To promote small-scale sustainable rural agriculture enterprises development in the communities.
2. To promote water technology in agriculture to increase agriculture output in rural areas.
3. Promote advocacy strategies for marginalized rural agriculturalist rights and peace building initiatives in the communities.
4. Promotion and support public Health programs geared towards fighting diseases in the doubly marginalized communities, fighting pollution and pollutants by encouraging healthy environment so as to ensure climate change.
5. To promote Training programs appropriate for community development.
6. To promote Research and information management on communities challenge enterprise development in rural areas.

KARC ACTIVITIES/PROGRAMS

SMALL SCALE RURAL AGRICULTURE AND CONSERVATION ENTERPRISES

Organic farming, small scale Sustainable agriculture modernization, Bee keeping, Fruits management, small scale Animal rearing, Tree planting, produce and marketing, export, value addition, grading Kitchen garden, urban farming, environmental conservation and tourism mountain action and cultural heritages.

Under food security we have Fruit management, Kitchen garden, Bee keeping, Small scale animals rearing, Food conservation, storage, Agro food processing and Food baking.

FOOD AND NUTRITION HEALTH.

HIV/AIDS nutrition and diet, food processing and training food science, we Help survivors of floods, marginalized groups, organized violence, HIV/AIDS helpline and counseling

AGRICULTURAL COMMUNITIES RIGHTS

Ecologies of land and farming rights, conflict on land and dispute settlement, agricultural and conservation welfare.

HEALTH: sexual reproductive health, water borne diseases, and civic education on primary health care.

TRAINING

Work shop/ Demonstration plots, Vocational training, conservational training and community training programs relevant to rural agriculture and conservation enterprises

KARC TARET GROUP

➤ Vulnerable women, children.

ORGAN GRAM

1. KARC foundation structure has the highest policy making organ as the general assembly of members
2. Board of directors are in charge of policy making and overall supervision of policy implementation

The executive committee with coming up policy proposals to the general assembly of members and implementation of decisions and policies made by the general assembly of members. The executive committee supervises the affairs of the organization and appoints the members of the secretariat

The executive committee comprises of, chairman, vice chairman, treasurer, general secretary, legal adviser, technical advisor, one member.

3. Secretariat is headed by executive director. It comprises of coordinator, program officers, accountant, cashier, head master, teachers and principal.

Each program is attached to volunteer for effectiveness.

KARC SCOPE

Areas covered include:

Kyarumba, kasese town, L. Katwe, Kisinga, Kyondo, Mahango, Muhokya, and Rukoki subcounties in western Uganda .

KARC CORE VALUES

Vertical and lateral accountability, Transparency, discovery of innovation in agriculture is wisdom of life of people of Uganda, Gender sensitivity and Respect for nature resource utilization and consider agriculture as source of food for growing population in world.

PARTNERS

Tools with Amision UK, Marie- schlei-verein Associations Germany, SES Germany, The Prem Rawat Foundation, Kasese district local Government, Kasese district development net work, FOWODI, UNASO Kampala, IRIN USA, CTA Netherlands, Project hope UK, and Work Aid UK, VGIF USA and Uganda women network.

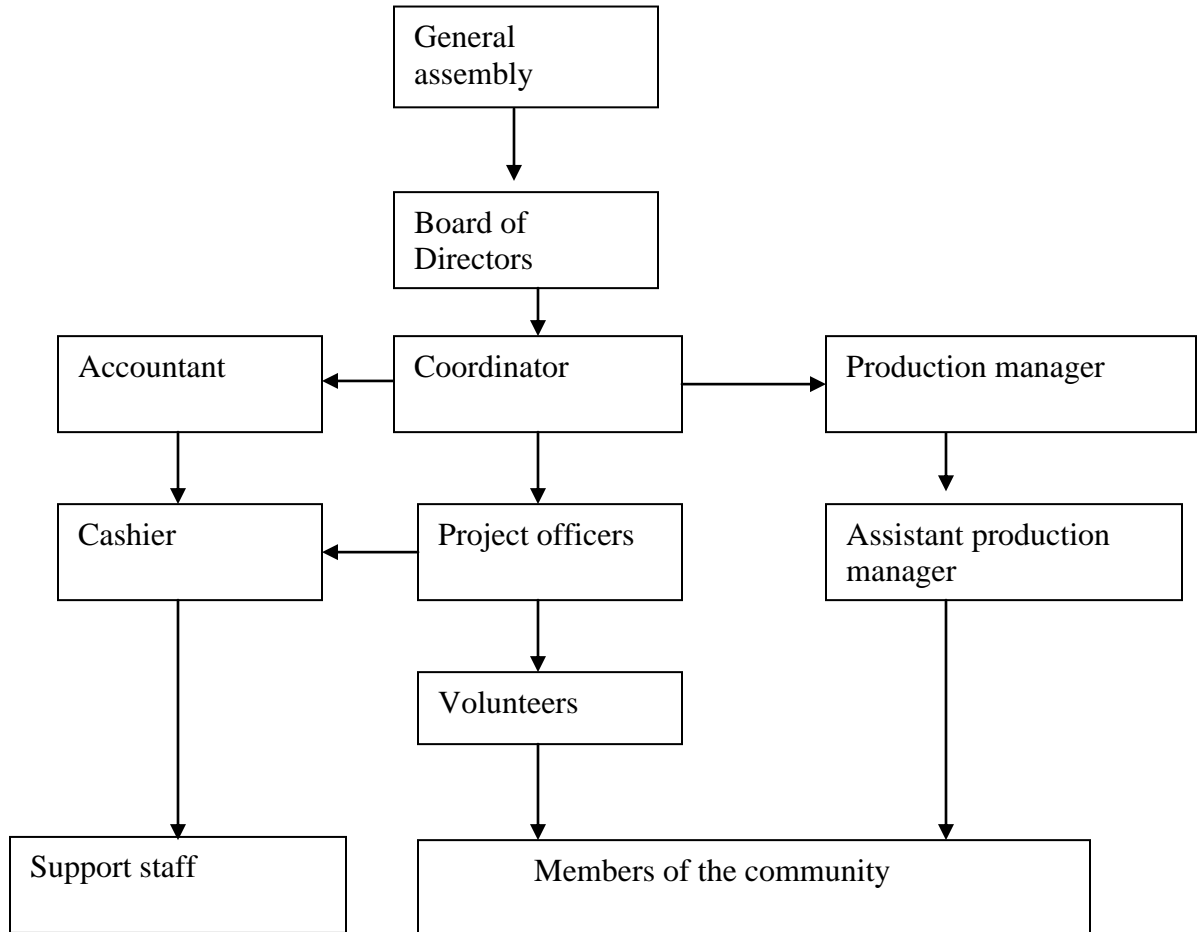
For more information contact:

1. Mrs KULE NGENE Helen
P.O Box 590 Kasese
+256756987602/0772606633
Email: kikumuar@gmail.com
Regina Kabugho
P.O BOX 263 Kasese Uganda

info@kikumuar.org

[www.http//kiumuagricultureresearchcentre.blogspot.com](http://kiumuagricultureresearchcentre.blogspot.com)

KARC ORGANISATIONAL STRUCTURE



ACTIVITIES AND PHOTOS FOR KARC-UGANDA

Poor agricultural practices cause soil damages, erosion and pollution in Uganda



Cocoa can save farmers better than coffee because of cost benefit analysis



Kikumu agriculture research centre funded 30000 US\$ towards construction of African ark primary school, supplied uniforms, meals and furniture through from support of TPRF.. The support is given towards orphans.



The project has economic empowerment of people with disadvantaged group. We have supported orphans and women leaving HIV/AIDS on lake Edward 1200 ducks for nutrition.



Conservation, processing coffee to determine market, processing coffee on mountain Rwenzori.



Training women in ICT and agriculture :women can use computer to know prices of coffee through internet using phone and computer.

