



Welcome to

Rote Island, West Timor, Indonesia



The people of Rote Island are rich! Rich in the way they uphold community and family values, underlying this is a community that sits at the lower end of the poverty scale. We in western society, are among the world's wealthiest, sitting at the top of the same scale.

Our dream is to bring families from their western world and immerse them, for a week or two into a neighborhood where community is everything.

We believe an exchange would take place where you take home an invaluable bond that will stay with you and your family. In return, the price you pay for an exotic trip will continue to bear fruit in the mission field of Indonesia for years to come.

The **vision** of 'Mercy Huts' is to establish eco friendly beachfront huts on beautiful Nemberala Beach, Rote Island, Indonesia. The purpose is to provide financial support, employment and training in hospitality and tourism for the poverty-stricken families of this area.



Contents

Overview	3
The Island	4
Features	5
Accommodation	6
Surf	7
Fishing & Diving	7
Project Timeline	8
Financials	10
Objectives	11
Get Involved	12



Providing a future for poverty-stricken children

Our vision is to establish eco-friendly beachfront accommodation on beautiful Nemberala Beach, Rote Island, Indonesia. The purpose is to provide financial support, employment and training in tourism and hospitality for families living in poverty.

Their Need - Your Opportunity

Mercy Huts needs to raise \$250,000 to build Mercy Huts and support poverty-stricken children.

Your investment today will go towards the construction of Mercy Huts, which will exist purely to provide a future for vulnerable children and communities. This will be achieved through our affiliation with 'Mercy Indonesia' - one of Indonesia's largest aid organisations.

Win-Win

When you help kick start this project, we invite you to come on a holiday at Mercy Huts and check out first-hand the impact your partnership with us is having. Why not bring your family along to experience it with you? Hey make it your annual trip away?!^

Imagine this - Beach side bungalows, riding world-class surf breaks, snorkelling and diving amidst pristine reefs, adventuring on chartered fishing tours and escaping to private beaches. All of this is made available to you on Rote's untouched coastline and your holiday serves to relieve poverty.

Mercy Huts needs to raise \$250,000 to build Mercy Huts - will you help us?

Please fill out the attached or enclosed donation form today to make your contribution.
Thank you for your support of responsible tourism and the alleviation of poverty.

Yours Sincerely

Matt Thistlewaite

Manager of Mercy Huts

^Holidays can be booked upon completion of Mercy Huts construction and landscaping. Special accommodations rates will be offered to significant givers.
+Picture displayed is a true picture of Mercy Huts beach front

The Island

The Worlds' Best Kept Secret

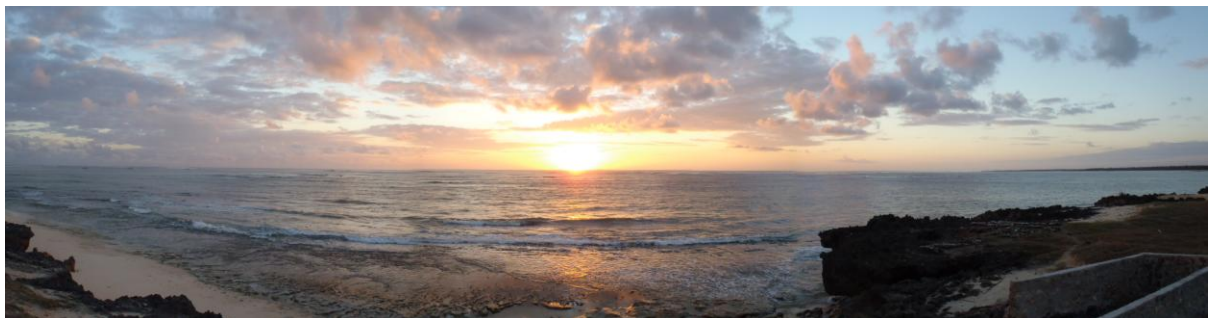
Rote island, future to 'Mercy Huts' is 500km North west of the Australian coast and is the closest Indonesian island to Australia. It sits just southwest of the larger island of Timor and is already known by a few surfers who are doing their best to keep this piece of paradise a secret. We would like to help keep it this way for as long as possible which is why we are limiting this opportunity to friends of Mercy Indonesia

A one and a half hour flight from Bali will get you to Kupang, the capital of West Timor. From Kupang a daily ferry runs down to Rote.



The Seasons

Surf season is typically May to November with trade winds usually consistent and offshore. Average daytime highs are 30°C (86°F) and nighttime lows are around 24°C (75°F). Rich sunsets over the ocean are to the delight of all witnesses. Water temperatures are up to 27°C making for very comfortable swimming and surfing.





Features of Rote

- At least 8 world-class surf breaks within an 8km radius.
- 4km of pristine white sandy beach at 'Mercy Huts' doorstep with walking path the entire length of beach.
- Rote is within what is known in dive circles as the 'coral triangle' so the diving possibilities are endless.
- Immediate 'Mercy Huts' beachfront protected by outer reef making safe and child-friendly swimming.
- Various islands within day trip range with great snorkelling and diving.
- Many known game fishing spots with plentiful supply including spear fishing areas
- Vegetation along Nemberala prolific with coconut trees giving tropical island ambience.
- Surrounded by natural beauty: Many pristine bays and small local villages to visit, whether by cycle or motor bike.
- Many caves and striking rock formations.
- Established bars and two restaurants within walking distance.
- Rote is home to [First World Surfing Champion Felipe Pomar](#), now 67yrs (Blog)
- The [Billabong Open surfing contest](#) has been held in Rote for the past 3 years (Youtube 7:14mins).
- Known for glorious red sunsets due to trade winds bringing red atmospheric dust from central Australia.
- Known, but yet to be discovered WWII Japanese Zero`s and other relics.
- Kiteboarding – see Nemberala beach lifestyle video, kiteboarding, surfing, beach activities (<http://vimeo.com/30030242> 5:25mins)

What to expect of your 'Mercy Huts' experience

Watch this entertaining video about the experience and journey to Rote's existing Resort 'Nemberala Beach Resort' - <http://vimeo.com/7448019> (15:13mins).

Accommodation

Our huts will be based on the simple but elegant lumbung style bungalow which has been successful throughout the archipelago. They are being designed to accommodate a family of up to 6. The upstairs loft area will consist of a double or Queen bed while downstairs will have 2 sets of double bunks. The thatched (alang alang) roofing and natural stone walls allowing for a cool internal ambience. A lovely private outdoor bathroom off the rear and a large deck for relaxation off the front of the hut.



1st Level

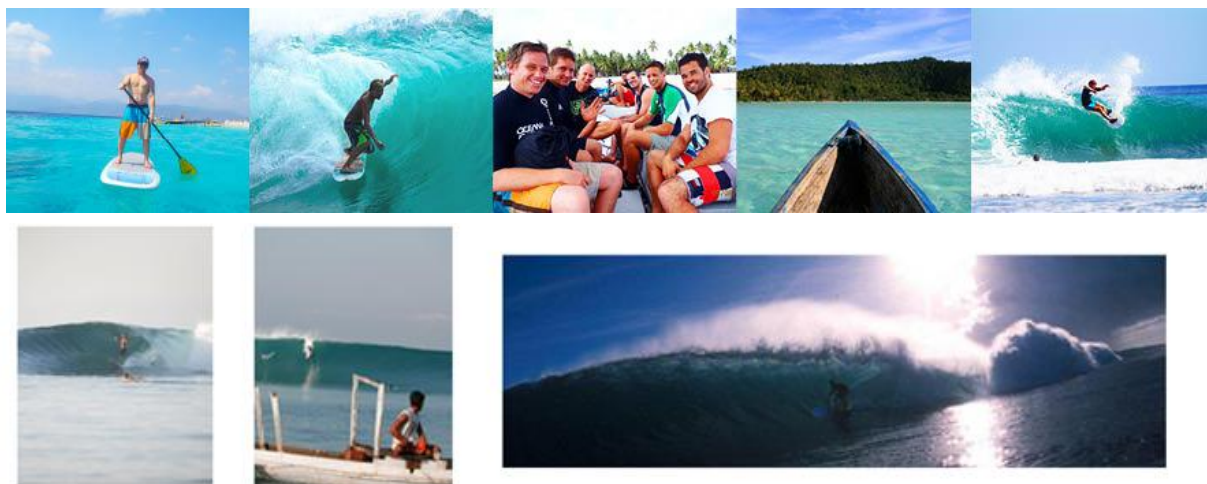


2nd Level

Activities - Surfing

“Rote has an amazing density of high quality reefs. The percentage of quality surfable reef here is higher than that of the Mentawai Island chain off West Sumatra. Almost every bend of reef and every corner of the surrounding islands has a wave peeling off it.” Courtesy of [Jim Banks` Indo Odyssey](#)

Close to our property on Nemberala beach is the legendary T-Land (*pictured below*), a 200m long world class left hander. Although it is a reef break all levels of surfing ability find it suitable and soft under foot. The wave is quite forgiving and the bigger it gets the more mercy it shows. A short bike ride north will bring you to a right hander called Sukinamon (*below right*), and there is also playful beginners wave even closer. A bit further south is another right hand reef break at Boa beach, where Billabong has hosted the Rote Open for the past 3 years.

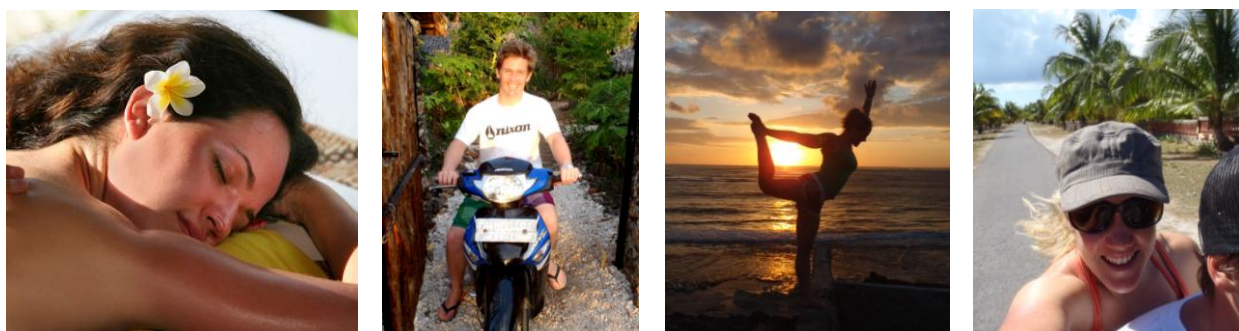


Activities - Fishing and Diving

[West Timor](#) is well established amongst the world diving community as “the” place to go. It offers some of the most interesting diving opportunities in the region, including freshwater caves, wreck and big fish diving around the off shore Islands. Rote is one of these islands and while it is yet to be put on the [map](#) of the [diving](#) world, exploratory teams are currently searching its many opportunities. Large numbers of manta ray and dugong have been sighted around the area which is promising for the future of diving here.

Timor Island, along with Rote and Sumba are fast becoming known as the game fishing capital of Eastern Indonesia due to the prolific numbers of big pelagic fish that cruise the ocean here. While there are no special game fishing boats available at the moment, it is possible to charter local boats. The local fishermen actually catch Marlin and Sailfish on their hand lines!

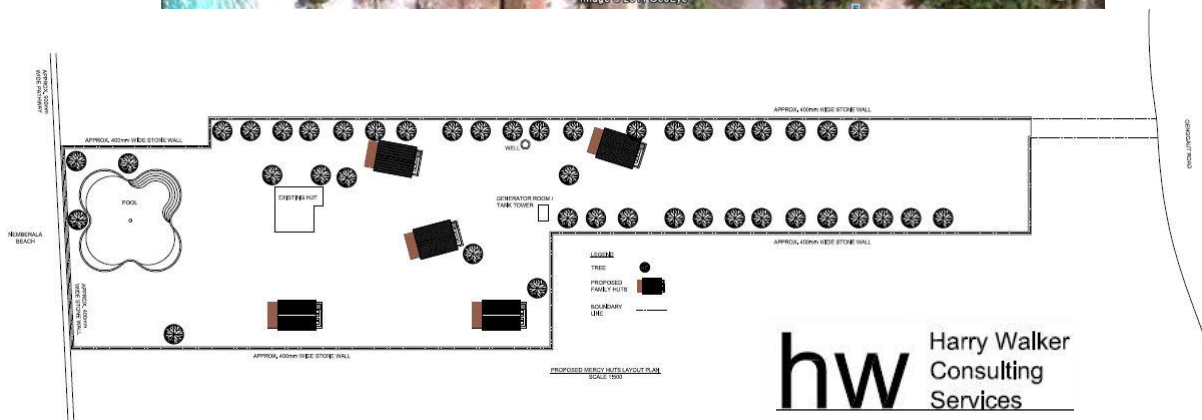
And so much more...



Project Timeline

Stage One: Land acquisition: January 2012

Steps are being taken to secure the land (75mx36m + 75mx18m) via a 20 year initial lease. A deposit has been placed on the land in order to make available the funds required to survey the property and register a title via local regulatory procedures. By late December 2012 the titles are due to be completed which are then transferred into Mercy Indonesia's name upon balance payment of \$60,000.



Stage Two: Planning: March 2012

Several drawings have been done of a two storey hut which will best suit a large family. The layout will be similar to the plan below with a double bed on the upper loft style room with two double bunks lower floor, an open air bathroom off the rear and deck area off the front. Once submitted to local authorities construction will begin in March 2012.



Project Timeline cont...

Stage Three: Construction: March/April 2012

We will be constructing two huts initially which will be available to stay upon completion of these huts and landscaping. Along with these two huts we will be constructing a small restaurant with additional Training room which will be functional in line with the completion of the first two huts. Envisaged cost is \$10,000 for the construction of each hut to this standard. The restaurant will be converted from the existing hut, and with accompanying training room is predicted to cost \$20,000. Power will be connected and additional underground septic tank to be installed. Water storage tank will be purchased and placed on top of the existing water tower/generator room. Estimated cost of \$500 in total for both tanks. PLM electricity connection to be installed.

At the same time we will be erecting a stone fence around the perimeter of the 'Mercy Huts' property as a measure of security, but foremost, to keep out the wandering wild life. The fence will require 400m of stone work which is estimated to cost \$4,000.

Stage Four: Landscaping: June 2012

At the completion of the two initial huts we will begin landscaping the grounds and depending on available funds construction of swimming pool and surrounds will begin. The pool is estimated to cost \$15,000 while the landscaping consisting mainly of labour is estimated at \$4,000.

Stage Five: Training: July 2012 - October 2012

During these set up stages we will be actively seeking reliable local staff to take on and train in running of a small commercial resort establishment. Training will include business management, restaurant service, surf, fishing, dive guides and assistants. Room servicing, pool maintenance and garden upkeep will be addressed also. Other areas of training will include basic marine mechanical repairs, ocean safety and navigation.

Stage Six: Construction of additional Huts: October 2012 –

Depending on available capital work on remaining four huts will commence.

Stage Seven: Capacity Building

Training of locals in tourism and hospitality to enable management of the resort.



Financials

Start up capital

Stage 1	=	(Land acquisition and planning)	=	\$70,000
Stage 2-6	=	(building & landscaping)	=	\$150,000
Stage 7	=	(capacity building and staffing)	=	\$30,000

Incomings and Outgoings

<u>Income*</u>		<u>Expenses^</u>		
yr1	\$21,000	Staff	\$4,200	
yr2	21,000	Fuel	\$6,300	
		Laundry	\$2,000	
		Water	\$2,300	
		Rates	\$3,000	
	\$42,000		\$17,800	Profit \$24,200

*Income based on April-October season for 2 huts @ \$200 p/night at an occupancy rate of 50%

^Expenses based on running two staff for season at 100% occupancy

'Mercy Huts' Objectives

- Combat poverty through training locals in business, tourism & hospitality industries. Achieve this through the promotion of responsible tourism.
- Develop an eco-resort on tropical Nemberala Beach.
- Become the leader in ecologically sustainable resorts on the island.
- Minimal carbon footprint and impact on the environment.



Booking your holiday with 'Mercy Huts'



When you help kick start this project, we invite you to come on a holiday at Mercy Huts and check out first-hand the impact your partnership with us is having. Why not bring your family along to experience it with you? Hey make it your annual trip away?!

Enjoy a spacious beachside bungalow on your holiday and surf some of the best breaks in the world, catch some of the biggest fish you could imagine in the pelagic highway that runs along Rote's coastline. Discover pristine reefs as you scuba dive, all with the knowledge that this holiday will continue to invest into the lives of less fortunate children of Indonesia.

Help us help them by making your contribution today!

Please direct all enquiries to Manager of 'Mercy Huts'

Matt Thistlewaite

Australia: 0438 944 860

Indonesia: +62 821 461 494 95

Email: rotevillas@live.com.au

www.mercyhuts.com

YES I want to help Mercy Huts reach their goal & Positively impact the lives of poverty-stricken children

please accept my investment of:

- ☐ \$5,000 (which can purchase a bus to provide transport for 15 children so they can access education)
- ☐ \$10,000 (which can build 1 hut = \$6000 annual profit = food, shelter, schooling and clothing for 8 children for 1 year)
- ☐ \$20,000 (which can build a communal area, restaurant and training room)
- ☐ \$_____ My choice

OR

I would like to pledge \$_____ per month (\$40 minimum) - Enables you to receive regular updates on the work of Mercy Huts

personal details

Title: _____ Name: _____

Address: _____

Suburb: _____ State: _____ P/C: _____

(H) Ph: _____ (W) Ph: _____ Mob: _____

Email: _____ DOB: _____

Payment Options:

☐ Credit Card ☐ Direct Bank Transfer ☐ Cheque/Money Order (Payable to: ACC International Mercy Huts)

Credit Card Option ☐ MasterCard ☐ Visa ☐ AMEX ☐ Diners

Card Number:

Name on Card: _____ Expiry Date: /

Signature: _____ Date: _____

Direct Bank Transfers to: AOG World Missions BSB: 013384 Acc No: 256194005 Reference: M042 MH 'Surname'

Date: _____ (Money was transferred) Name: _____ (Of Account Holder)

Description: _____ (Reference: M042 MH 'Surname')

Please mail this form to: ACC International, PO Box 5371, Brandon Park VIC 3150 or scan email to kien.bui@wm.acc.org.au