



**LOCAL SUSTAINABLE COMMUNITIES
ORGANISATION
(LOSCO)**

LOSCO VISION AND MISSION

Vision:

Stable and Sustainable Community Development.

Mission:

Through partnerships and Networks with other like-minded NGOs and Government Agencies, LOSCO exists **“To promote community transformation”**.

OBJECTIVES OF THE ORGANIZATION:

To bring social reforms in communities through training and sensitisation of individuals and masses

To promote social Justice in all spheres of life such as education, health, recreation, and employment, child protection and trainings in positive parenting and rights and responsibilities of Women, Youth, children and PWDs.

To motivate and empower people in various socio-economic sectors for their arousal and working for community welfare and betterment of humanity.

To do all such other things as are incidental or conductive to the attainment of those objects.

YEAR OF ESTABLISHMENT & GOAL

It was established in 2017 and activities started on the 20th March 2018.

Goal:

To help Empower and develop the distressed, needy, neglected and vulnerable population in Uganda socially and economically by providing them necessary assistance for purposes of self sustainability through Education and Capacity Building especially the Youths, Women, PWDs and the Elderly

BACKGROUND:

Local Sustainable Communities Organisation (LOSCO) is a Non-Governmental not for Profit Organization that has the capacity and Experience to work with all government Agencies and bodies.

This NGO was formed according to the willingness of the church, local leaders and marginalised groups in a view to deal with the present socio-economic problems in different areas by means of good understanding and sharing the problems with each other and to find out the best way of solving them through free discussion and people participation in the decision making and get-together under an umbrella of LOSCO.

BACKGROUND CONTD..

Partnership was identified as a key factor in the development process with both internal and external CSO's and Donors as well as other government agencies.

LOSCO is Mandated to operate in all the regions of Uganda with the Head Office in Kabale – Southwestern Uganda.

CORE VALUES:

Transparency

Integrity

Trust

Efficiency

LEGAL STATUS OF THE ORGANIZATION

Registered with Kabale District Local Government (KDLG) Reg. No. 12513 dated 9th March 2018

Registered with Uganda Registration Services Bureau (URSB) No: 80020001927111 Dated 25th 06. 2019.

Registered with National Bureau for Non-Governmental Organisations (NGO Bureau) No. INDR146522475NB Dated 09.08.2019.

Permitted to Operate in Uganda's Regions No. INDP0002474NB regulated by Ministry of Internal Affairs and National NGO Bureau

Registered with The Data Universal Numbering System (DUNS) No. 561383638

LOSCO PROGRAMATIC APPROACH

ADVOCACY

CHILDREN

YOUTH



WOMEN

PLWDs

ELDERLY

EDUCATION

HEALTH

AGRICULTURE

INFRASTRUCTURE

COMMUNITY TRANSFORMATION

MAJOR PROGRAM ACTIVITIES

ADVOCACY – Child Protection, PWDs Rights, Women Empowerment, Youth Empowerment, Human Rights and Anti Abortion Movement

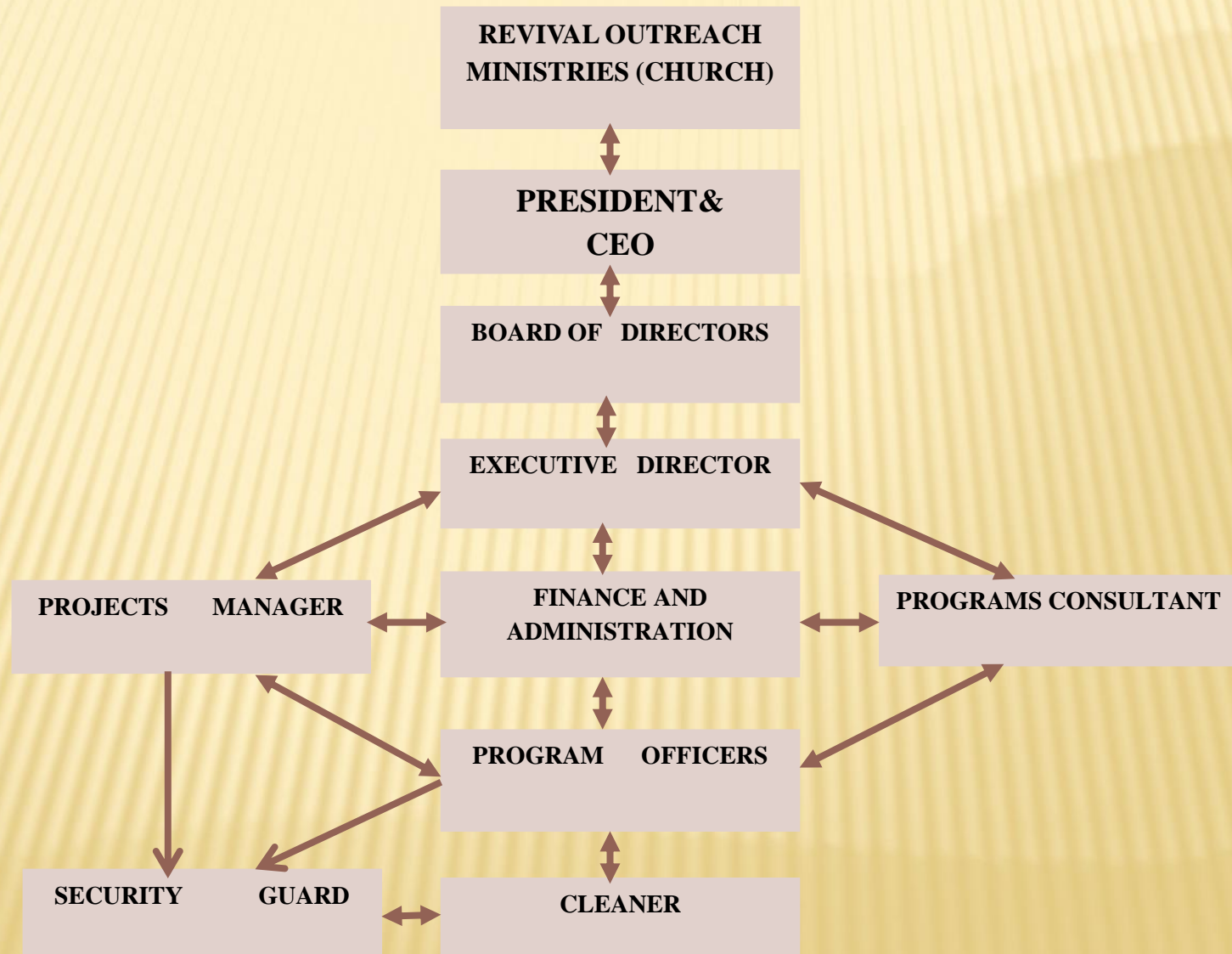
Education – Trainings, Capacity Building, Skills Development for Youths & Women, IGA Trainings

Health – Menstrual Hygiene, HIV/AIDS, Nutrition support

Agriculture – Training, Budget Advocacy & Support

Infrastructure – Shelter Renovations, Water Harvest Tanks

LOSCCO ORGANOGRAM



MEMBERSHIP

- ✘ AFRONGO (African NGO Council)
- ✘ DENIVA (Development Network of Indigenous Voluntary Associations)
- ✘ UNNGOF (Uganda National NGO Forum)
- ✘ NCHRD-U (National Coalition Of Human Rights Defenders Uganda)
- ✘ AWID (Association for Women's Rights in Development)
- ✘ UYONET (Uganda Youth Network)
- ✘ KICSOF (Kigezi Civil Society Forum)
- ✘ KACSOF (Kabale Civil Society Forum)

PARTNERS

- ✘ KIHEFO (Kigezi Health Care Foundation)
- ✘ KICK-U (Kick Corruption out of Uganda)
- ✘ KDLG (Kabale District Local Government)
- ✘ KMC (Kabale Municipal Council)
- ✘ HOPE MISSION Uganda
- ✘ KWID (Kigezi Women in Development)
- ✘ GOP (Garden of Prosperity Women Development Association)

AREAS FOR CAPACITY BUILDING

- ✘ Resource mobilization
- ✘ Strengthening Operational structures
- ✘ Monitoring and Evaluation
- ✘ Strategic Organisational policies & plan
- ✘ Documentation
- ✘ Partnership and Collaborations

YOU CAN SUPPORT LOSCO THROUGH:

- ✘ Making cash donations for general support. All support goes towards advocacy interventions and modest running cost. (Cheques should be made payable to LOCAL SUSTAINABLE COMMUNITIES ORGANISATION)
- ✘ Making a one-off or on-going donation towards a specific issue close to your heart, i.e. Children orphaned by a particular crisis (HIV/AIDS, Violence), disease outbreak, Hunger outbreak, Natural Hazards etc.;
- ✘ Making a donation in the name of a passionate activist issue such as health, education, advocacy, etc.
- ✘ Gifts of equipment i.e. computers, photocopiers, vehicles, etc.;
- ✘ Providing information on possible sources of funding;
- ✘ Offer your services as a volunteer for LOSCO.

ACTIVITIES PICTORIAL



Mothers being trained on Breast Feeding



Breast Feeding mothers given food support

PICTORIAL CONTD....



Some of the Vulnerable households Supported with food items



One of the Police Stations Supported with Office Chairs

PICTORIAL CONT'D



Youth being trained in fight against HIV/AIDS and Prevention



Youth trained in Child Evangelism

PICTORIAL CONT'D....



Organisation Members learning the word of God



Organisation Members at the AGM

RECOMMENDATIONS

- ✘ Strengthening Operational Policies & structures.
- ✘ Conducting Institutional peer learning through exchange visits.
- ✘ Mentorship, coaching and Capacity Building
- ✘ Logistical support to achieve the objectives.
- ✘ Partnerships for wider coverage and greater social economic impact

CONTACT DETAILS

Plot 110, Kabale-Mbarara rd
SWUWS Building RM2
P.O BOX 572
KABALE
UGANDA – E.AFRICA

TEL: +256703302011, +256770940325

Email: localsustainco@gmail.com

Facebook: @LOCAL-Sustainable-Communities-Organisation

Twitter: @CommunitiesOrg

LinkedIn:@Local Sustainable Communities

Instagram: @Local_communities

Web: <https://localsustainablecommunitiesorg.blogspot.com>

<https://www.globalhand.org/en/organisations/48498>

END

While it is important to think positively, it is equally important to go beyond positive thinking and to become aware of the possibilities in every situation, viewing life as more than a struggle to survive, but an exciting array of challenges and opportunities.

People who embrace possibility are capable of accomplishing tasks that seem impossible because they believe in solutions.

“TOGETHER, WE CAN; TOGETHER WE WILL”